

Hypertherm®

Powermax® family brochure

Portable air plasma cutting and gouging systems





Contents

5	Understanding plasma technology
5	Why choose Powermax® over oxyfuel?
7	Why choose Powermax over other cutting and gouging systems?
7	Choose the right system
8	Powermax uses
9	Powermax30 XP
10	Powermax30 AIR
11	Powermax45
12	Powermax65
13	Powermax85
14	Powermax105
15	Powermax125
16	System specifications comparison
19	Automated cutting and gouging with Powermax
20	Genuine Hypertherm consumables
21	Duramax™ retrofit torches
22	Cutting guides, Personal protective equipment
24	System accessories
27	Nearly 50 years of cutting excellence



Understanding plasma technology

Powermax systems cut metal quickly, and cleanly

Plasma, and its intense heat (up to 39,000° F or 22,000° C), is created when gas is ionized by electrical energy. Powermax® systems use plasma to melt metal, and compressed air or nitrogen to blow the molten metal away, leaving a good quality cut edge ready to weld in most cases. Powermax systems are also effective for gouging metal.

Cut or gouge any electrically conductive metal

Whether in a shop, factory, at home or in the field, Powermax systems cut and gouge all metal types and forms. Most models are available with a handheld or machine torch to fit the application.

Operating a plasma system requires:

- AC power source (fixed or generator)
- Compressed air – shop air, portable air compressor or bottled air. Nitrogen is often used for stainless steel
- Safety equipment, including shaded glasses or face shield, gloves, protective clothing and proper ventilation

Why choose Powermax over oxyfuel

Safer

Cutting with a plasma system needs no flammable gasses.

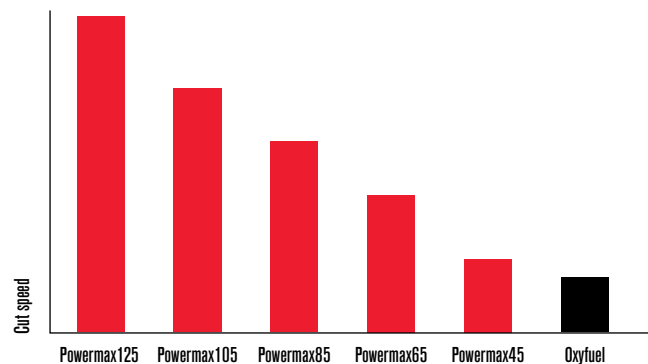
More productive

Much faster cut speeds up to 1-1/2" thick; no preheating needed; a cleaner edge with smaller heat-affected zone (HAZ) requires less grinding of the cut edge.

More versatile

Cuts and gouges all electrically conductive metal including stainless steel and aluminum; easily used with templates, cuts stacked, painted, or rusted metal.

Cut speed comparison on 1/2" mild steel



For more information, refer to product brochures or visit www.hypertherm.com/powermax/



Why choose Powermax over other cutting or gouging systems

More productive

Our consumable technology delivers faster speeds and better cut quality to help you do more in less time.

Easier to use

High portability, simple controls and a stable plasma arc make Powermax® systems easy to operate for beginners and experts.

More versatile

With the largest variety of torch options for cutting and gouging, you can leverage a Powermax for many jobs.

Lower operating cost

Faster speeds and longer consumable life lower your cost of cutting and gouging metal.

More reliable

Smart design plus intense testing during product development and manufacturing keeps you up and running.

Confidence

Hypertherm's focus on plasma by our associate-owners, and the proven performance of our global installed base of systems gives you confidence that you are buying the best.

To choose the Powermax system that will best suit your long term needs, please consider the following questions

What thickness of metal will you be cutting?

Powermax plasma can cut from sheet metal to 2-1/4". Choose the Powermax system with the recommended capacity for the thickness of metal you expect to cut 80% of the time or more.

Will the cutting or gouging be done by a handheld torch or with an automated machine?

For automated cutting, select a machine-torch compatible Powermax system with interface options for automation equipment like a CNC table, robot and track cutters.

What electrical service do you use?

Knowing the incoming line voltage, phase and breaker size where the system will be used ensures your electrical service can support the Powermax system you choose.

Will the plasma system be powered by an engine-drive generator?

Each Powermax system requires a minimum kilowatt output to deliver full performance. Refer to page 16 for more operating information using generators.

What is your compressed gas source?

Powermax systems require compressed air or nitrogen for operation. The gas must be dry and free of contaminants. An optional filter is available to ensure clean and dry gas. Refer to gas flow rate and pressure requirements in the chart on page 16.

Powermax uses

Handheld, cutting and gouging



Freehand



Straight guide



Circle guide



Weld removal



Templates

X-Y-Z cutting



Light table

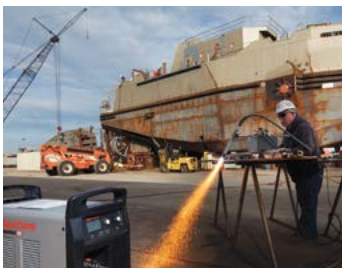


Heavy table

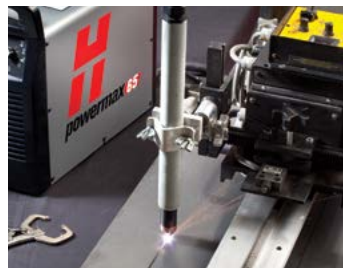


Robotic

Mechanized straight-line cutting and gouging



Bevel cut



Straight cut



Gouging

Use with a generator



Handheld cutting in the field



Portable mechanized cutting

Pipe cutting



In the field



In the factory



Powermax30 XP

The Powermax30® XP delivers high performance in a small, portable package. With its two-in-one design, the system provides high-power capability for thick metal cutting, plus FineCut® consumables for detailed, thin metal cutting. Combined with a custom carry case, shaded glasses, cutting gloves and adapter plugs for 120 V or 240 V circuits, this system is designed to get you cutting quickly and easily.



Model (input voltage, phase, certification)	Handheld system
	Duramax™ LT torch 15'
Powermax30 XP (120-240 V, 1-PH, CSA)	088079

Capacity	Thickness	Cut speed
Recommended	3/8"	at 20 ipm
	1/2"	at 10 ipm
Severance	5/8"	at 5 ipm



Duramax LT hand torch

Watch a Powermax® system demonstration at
www.hypertherm.com/powermax/videos/



Powermax30 AIR

The small size and light weight of the new Powermax30® AIR, with an internal compressor, make it a highly portable system enabling metal cutting just about anywhere there is single phase power. Simply plug it in, attach the work clamp and you are ready to cut. The internal compressor eliminates the need for an external air compressor and filter to operate the plasma system. The fast cutting speeds and superior cut quality of Powermax plasma enable you to finish jobs quicker.

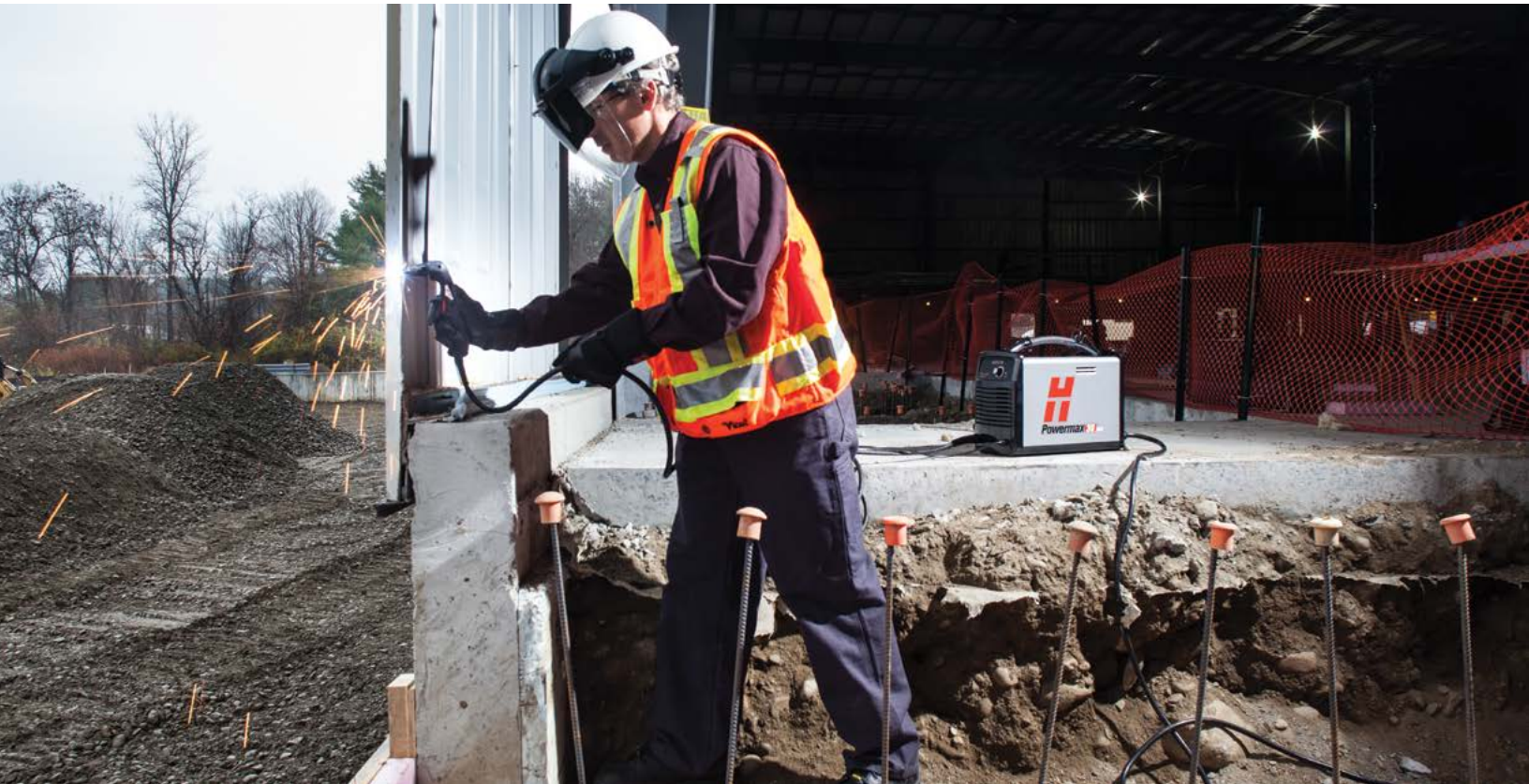


Model (input voltage, phase, certification)	Handheld system
	AIR T30 torch 15'
Powermax30 AIR (120-240 V, 1-PH, CSA)	088096

Capacity	Thickness	Cut speed
Recommended	5/16"	20 ipm
	3/8"	10 ipm
Severance	5/8"	5 ipm



AIR T30 hand torch





Powermax45

Our best selling system, the Powermax45 is the most trusted 1/2" system on the market. Being the lowest amperage system in the Powermax line with mechanized capability, it has a broad set of application capabilities that make it a truly multi-purpose tool for cutting and gouging. The machine interface for CNC control and FastConnect™ torch connection increases versatility for handheld and mechanized use.

Below are some of the most common system configurations which include a power supply, torch, work cable and starter consumable kit.

Model (input voltage, phase, certification)	Handheld systems		Mechanized systems	
	T45v torch 20'	T45v torch 50'	T45m torch 25'	T45m torch 50'
Powermax45 (200-240 V, 1-PH, CSA)	088016	088017	088022	088024
Powermax45 (480 V, 3-PH, CSA)	088072	088073		

Capacity	Thickness	Cut speed
Recommended	1/2"	at 20 ipm
	3/4"	at 10 ipm
Severance	1"	at 5 ipm
Pierce	1/2"*	

*Pierce rating for handheld use or with automatic torch height control



T45v hand torch



T45m machine torch

Powermax65

Offering the latest technological innovations, like Smart Sense™ technology to automatically adjust the gas pressure, the Powermax65® helps you do more than ever before. A variety of Duramax™ torch styles provide exceptional versatility for hand cutting or gouging, portable automation, X-Y table and robotic cutting or gouging.

Below are some of the most common system configurations, which include a power supply, torch, work cable and starter consumable kit.



Model (input voltage, phase, certification)	Handheld systems			Mechanized systems		
	75° torch 25'	75° torch 50'	75° and 15° torches 25'	180° full-length torch 25' with remote pendant	180° full-length torch 50' with remote pendant	180° full-length torch and 75° hand torch 25'
Powermax65* (200-600 V, 1/3 PH, CSA)	083275	083276	083307	083277	083278	083300

*with CPC port

Capacity	Thickness	Cut speed
Recommended	3/4"	at 20 ipm
	1"	at 10 ipm
Severance	1-1/4"	at 5 ipm
Pierce	5/8"	

*Pierce rating for handheld use or with automatic torch height control



75° hand torch



15° hand torch



180° mini machine torch



180° full-length machine torch





Powermax85

The premier system for cutting 1", the Powermax85 has the same features and options as the Powermax65, but with more power from a max output current of 85 amps. A variety of Duramax torch styles provide exceptional versatility for hand cutting or gouging, portable automation, X-Y table and robotic cutting or gouging.

Below are some of the most common system configurations, which include a power supply, torch, work cable and starter consumable kit.



Model (input voltage, phase, certification)	Handheld systems			Mechanized systems		
	75° torch 25'	75° torch 50'	75° and 15° torches 25'	180° full-length torch 25' with remote pendant	180° full-length torch 50' with remote pendant	180° full-length torch and 75° hand torch 25'
Powermax85* (200-600 V, 1/3-PH, CSA)	087113	087114	087144	087115	087116	087135

*with CPC port

Capacity	Thickness	Cut speed
Recommended	1"	at 20 ipm
	1-1/4"	at 10 ipm
Severance	1-1/2"	at 5 ipm
Pierce	3/4"*	

*Pierce rating for handheld use or with automatic torch height control



Powermax105

At 105 amps, the Powermax105® offers cut speeds more than three times faster than oxyfuel. Smart Sense technology in the Powermax105 also detects consumable end-of-life, automatically turning off power to the torch to prevent potential damage to other parts or the work piece. A variety of Duramax™ torch styles provide exceptional versatility for hand cutting and gouging, portable automation, X-Y table and robotic cutting or gouging.

Below are some of the most common system configurations, which include a power supply, torch, work cable and starter consumable kit.



Model (input voltage, phase, certification)	Handheld systems			Mechanized systems		
	75° torch 25'	75° torch 50'	75° and 15° torches 25'	180° full-length torch 25' with remote pendant	180° full-length torch 50' with remote pendant	180° full-length torch and 75° hand torch 25'
Powermax105 (200-600 V, 3-PH, CSA)	059376	059377	059382	059378	059379	059384

*with CPC port and voltage divider

Capacity	Thickness	Cut speed
Recommended	1-1/4"	at 20 ipm
	1-1/2"	at 10 ipm
Severance	2"	at 5 ipm
Pierce	7/8"	

*Pierce rating for handheld use or with automatic torch height control



75° hand torch



15° hand torch



180° mini machine torch



180° full-length machine torch



Powermax125

With maximum power and performance for air plasma, the new Powermax125 cuts fast and thick. A 100% duty cycle, a 1" pierce capability, and a gouging metal removal rate of 27.6 lbs/hour, make the Powermax125 the tool for any industrial cutting or gouging job. The new Duramax Hyamp™ torch series is available in a variety of styles to address the widest variety of cutting and gouging applications.

Below are some of the most common system configurations, which include a power supply, torch, work cable and starter consumable kit.



Model (input voltage, phase, certification)	Handheld systems			Mechanized systems		
	85° torch 25'	85° torch 50'	85° and 15° torches 25'	180° full-length torch 25' with remote pendant	180° full-length torch 50' with remote pendant	180° full-length torch 50' and 85° hand torch 25'
Powermax125* (480 V, 3-PH, CSA)	059536	059537	059538	059539	059540	059541
Powermax125* (600 V, 3-PH, CSA)	059546	059547	059555	059552	059553	059544

*with CPC port and voltage divider

Capacity	Thickness	Cut speed
Recommended	1-1/2"	at 18 ipm
	1-3/4"	at 10 ipm
Severance	2-1/4"	at 5 ipm
Pierce	1"***	

**Pierce rating for handheld use or with automatic torch height control



85° hand torch



15° hand torch



180° mini machine torch



180° full-length machine torch

Duramax and Duramax Hyamp application torches

The Duramax torch series includes torches for every application need, from gouging to robotic to extended reach.



15° Duramax hand torch



45° Duramax robotic torch



90° Duramax robotic torch



180° Duramax robotic torch



45° Duramax Hyamp 2' Long torch



45° Duramax Hyamp 4' Long torch

	Duramax robotic torches			Duramax Hyamp robotic torches			Duramax Hyamp 2' Long torches		Duramax Hyamp 4' Long torches	
	45°	90°	180°	45°	90°	180°	45°	90°	45°	90°
25'	059464	059465	059466	059564	059565	059566	059562	059563	059567	059568
50'							059579	059580	059581	059582

All Duramax Hyamp torches are compatible with the Powermax65, 85, 105 and 125.

All Duramax torches are compatible with the Powermax65, 85 and 105 only.

System specifications comparison

		Powermax30® XP	Powermax30® AIR	Powermax45®	
Handheld cut capacity	Recommended	3/8"	5/16"	1/2"	
		1/2"	3/8"	3/4"	
	Severance	5/8"	5/8"	1"	
Mechanized pierce capacity	with automatic torch height control	Not applicable	Not applicable	1/2" ¹	
	without automatic torch height control	Not applicable	Not applicable	3/8"	
Gouge capacity	Metal removed per hour	Not applicable	Not applicable	6.2 lbs	
	depth x width ²	Not applicable	Not applicable	.13 x .22"	
Output current		15–30 A	15–30 A	20–45 A	
Input voltages		120–240 V, 1-PH, 50/60 Hz	120–240 V, 1-PH, 50/60 Hz	200–240 V, 1-PH, 50–60 Hz 480 V, 3-PH, 50–60 Hz	
Rated output voltage		125 VDC	83 VDC	132 VDC	
Input current		120–240 V, 1-PH, 25.5–18.8 A	120–240 V, 1-PH, 28.7–15 A	200/230 V, 1-PH, 34/28 A 480 V, 3-PH, 9 A	
Duty cycle ³		35%, 240 V 20%, 120 V	35%, 240 V 20%, 120 V	50% @ 45 A, 200–240 V, 1-PH 60% @ 41 A, 200–240 V, 1-PH 100% @ 32 A, 200–240 V, 1-PH 50% @ 45 A, 480 V, 3-PH 60% @ 41 A, 480 V, 3-PH 100% @ 32 A, 480 V, 3-PH	
Dimensions with handle		depth x width x height	14.0 x 5.5 x 12.0"	16.5 x 7.7 x 13.1"	16.75 x 6.75 x 13.7"
Weight with torch			21.4 lbs	29.8 lbs	37 lbs
Gas supply		Air or N ₂	Not applicable	Air or N ₂	
Recommended flow rate and pressure		Cutting: 4 scfm @ 80 psi	Not applicable	Cutting: 360 scfh, 6 scfm @ 80 psi Gouging: 360 scfh, 6 scfm @ 60 psi	
Torch lead lengths	Handheld	15'	15'	20', 50', 75'	
	Mechanized	Not applicable	Not applicable	15, 25, 35, 50, 75'	
Motor generator requirements for full arc stretch at full output		5.5 kW	5.5 kW	8 kW	

¹ Pierce rating for handheld use or with automatic torch height control.

² Dependent on speed, torch angle and standoff.

³ Hypertherm's duty cycle ratings are established at 104° F, according to international standards, and are determined at actual cutting arc voltage levels.

	Powermax65®	Powermax85®	Powermax105®	Powermax125®
	3/4"	1"	1-1/4"	1-1/2"
	1"	1-1/4"	1-1/2"	1-3/4"
	1-1/4"	1-1/2"	2"	2-1/4"
	5/8" ¹	3/4" ¹	7/8" ¹	1" ¹
	1/2"	5/8"	3/4"	7/8"
	10.7 lbs	19.5 lbs	21.7 lbs	27.6 lbs
	.14 x .26"	.23 x .28"	.32 x .26"	0.17-0.31 x 0.24-0.39"
	20-65 A	25-85 A	30-105 A	30-125 A
	200-480 V, 1-PH, 50-60 Hz 200-600 V, 3-PH, 50-60 Hz 139 VDC	200-480 V, 1-PH, 50-60 Hz 200-600 V, 3-PH, 50-60 Hz 143 VDC	200-600 V, 3-PH, 50/60 Hz 160 VDC	480 V, 3-PH, 50-60 Hz 600 V, 3-PH, 50-60 Hz 175 VDC
	200/208/240/480 V, 1-PH, 52/50/44/22 A 200/208/240/480/600 V, 3-PH, 32/31/27/13/13 A	200/208/240/480 V, 1-PH, 70/68/58/29 A 200/208/240/480/600 V, 3-PH, 42/40/35/18/17 A	200/208/240/480/600 V, 3-PH, 50/60 Hz, 58/56/49/25/22 A	480/600 V, 3-PH, 50/60 Hz, 31/24 A
	50% @ 65 A, 230-600 V, 1/3-PH 40% @ 65 A, 200-208 V, 1/3-PH 100% @ 46 A, 230-600 V, 1/3-PH	60% @ 85 A, 230-600 V, 3-PH 60% @ 85 A, 480 V, 1-PH 50% @ 85 A, 240 V, 1-PH 50% @ 85 A, 200-208 V, 3-PH 40% @ 85 A, 200-208 V, 1-PH 100% @ 66 A, 230-600 V, 1/3-PH	50% @ 105 A, 200 V, 3-PH 54% @ 105 A, 208 V, 3-PH 70% @ 105 A, 240 V, 3-PH 80% @ 105 A, 480-600 V, 3-PH 100% @ 94 A, 480-600 V, 3-PH 100% @ 88 A, 240 V, 3-PH 100% @ 77 A, 208 V, 3-PH 100% @ 74 A, 200 V, 3-PH	100% @ 125 A, 480/600 V, 3-PH
	19.7 x 9.2 x 17.9"	19.7 x 9.2 x 17.9"	23.3 x 10.8 x 20.0"	23.3 x 10.8 x 20.0"
	64 lbs	71 lbs	100 lbs	480 V 105.7 lbs 600 V 104.7 lbs
	Air or N ₂	Air or N ₂	Air or N ₂	Air or N ₂
	Cutting: 400 scfh, 6.7 scfm @ 85 psi Gouging: 450 scfh, 7.5 scfm @ 70 psi 25, 50, 75'	Cutting: 400 scfh, 6.7 scfm @ 85 psi Gouging: 450 scfh, 7.5 scfm @ 70 psi 25, 50, 75'	Cutting: 460 scfh, 7.7 scfm @ 85 psi Gouging: 480 scfh, 8.0 scfm @ 70 psi 25, 50, 75'	Cutting: 550 scfh, 9.2 scfm @ 85 psi Gouging: 450 scfh, 7.5 scfm @ 60 psi 25, 50, 75'
	15, 25, 35, 50, 75'	15, 25, 35, 50, 75'	15, 25, 35, 50, 75'	15, 25, 35, 50, 75'
	15 kW	20 kW	30 kW	40 kW

Handheld cut capacity

Recommended – The thickness of mild steel on which the system delivers good cut quality and speeds at about 20" per minute or faster. Eighty percent or more of cutting should be at the recommended thickness.

Severance – The thickness that can be reasonably severed at a minimum of 5" per minute but with poor cut quality. Cutting the severance thickness should be infrequent.

Capacity ratings

There is no industry standard for rating plasma systems, so it is important to take care when comparing brands.

Mechanized pierce capacity

The thickness of mild steel that may be pierced using an automated torch height control without excessive wear on the consumable parts. Cut capacity for edge starts is the same as handheld capacity.



Automated cutting and gouging with Powermax

Industrial duty cycles, low operating costs and Hypertherm reliability make Powermax systems ideal for many mechanized applications.

Powermax® systems are used on X-Y cutting tables, 3-dimensional robots, track cutting systems and pipe cutting and beveling machines. FastConnect™ technology enables easy switching between handheld and machine torches.

Using a Powermax plasma system in a mechanized application

The equipment required to run a Powermax system in a mechanized application varies. For example:

- To automate long, straight cuts, a mechanized torch, a remote on/off pendant and track cutter may be all that is needed.
- An entry-level X-Y table application requires a mechanized torch, control cable, and a computer numeric control (CNC) along with the table and lifter.
- For optimum performance on an X-Y table, a programmable torch height control and nesting software would also be used. Proper torch height reduces dross while improving cut angularity and speed.

Mechanized communications

Mechanized Powermax systems include a standard machine interface through a CPC port, which provides access to start, transfer, and divided voltage signals.

For increased control of the power supply through a CNC, the Powermax65, Powermax85, Powermax105 and Powermax125 are available with an optional RS-485 serial interface port (ModBus ASCII protocol).

One of Hypertherm's long-standing core values is a focus on minimizing our impact on the environment. Doing so is critical to our, and our customers', success. We are always striving to become better environmental stewards; it is a process we care deeply about.

Our products are engineered to go well beyond environmental regulatory requirements. We choose to meet the EU RoHS directive for restricting the use of hazardous materials, such as lead and cadmium, in our Powermax products. Our Powermax systems are manufactured in a LEED Gold designated factory where we purchase 100% renewable energy and are on a path the zero landfill waste. Powermax products are shipped in 100% recyclable packaging. We are also working to make our Powermax systems more efficient so they cut thicker and faster yet use less energy.

An example of this is the Powermax65 compared to an earlier predecessor, the MAX100®. Both have the same cut capacities, yet the Powermax65 is much smaller, lighter and uses less power.



	MAX100	Powermax65	Difference
Cut capacity	1-1/4"	1-1/4"	SAME
Output	100 A	65 A	35% less
Size	21" ³	1,9" ³	90% smaller
Weight	420 lbs	64 lbs	85% lighter

For more information about automated cutting refer to the Powermax Mechanized Applications brochure.



Genuine Hypertherm consumables

You can cut with confidence knowing that Hypertherm is dedicated to supporting your operation with high-quality parts. When purchasing consumables for your Powermax® system, look for an easy to understand color code system on the packaging organized by torch series, to identify the right consumables for your Powermax handheld or mechanized torches.

Consumable kits

- Consumable kits offer a convenient means of experiencing the versatility of Powermax plasma systems.
- FineCut® kits – feature consumables that deliver high-quality cuts on thin metal for a narrow kerf and virtually dross-free cutting.
- All-in-one kits – are customized by torch series to feature a range of consumables for cutting and gouging applications.
- Bulk kits – economical for high volume use of select consumables.



Torch series	Color code
T30v, T45v, T45m	Blue
AIR T30	Green
Duramax LT	Yellow
Duramax and Duramax RT	Red
Duramax Hyamp™	Purple
Legacy	White



All-in-one kits

Powermax system	Torch series	Torch type	English kit number*
Powermax30 XP	Duramax LT	Handheld	851390
Powermax45	T45v/T45m	Handheld CSA Handheld CE	850490 850740
Powermax65	Duramax or Duramax RT	Handheld Mechanized	850910 850900
Powermax85	Duramax or Duramax RT	Handheld Mechanized	850890 850880
Powermax105	Duramax or Duramax RT	Handheld Mechanized	850992 850985
Powermax125	Duramax Hyamp	Handheld Mechanized	851370 851380

*Kits are available in different languages, contact a local distributor for ordering information.

FineCut kits

Torch series	Torch type	English kit number*
Duramax Hyamp	Handheld/Mechanized	851400
Duramax or Duramax RT	Handheld	850930
Duramax or Duramax RT	Mechanized	850920

*Kits are available in different languages, contact a local distributor for ordering information.

Duramax retrofit torches

If you own a Powermax600, 800, 900, 1000, 1250, 1650 or MAX42/43® system and are not ready to purchase a new Powermax system, you can enhance the performance of your system with a Duramax retrofit torch.

Duramax technology advantages

- Proprietary, fiber-reinforced torch handle is 5 times more impact resistant and 20% more heat resistant to withstand your toughest metal-cutting applications.*
- Duramax™ RT torches use the same consumables as new Powermax systems to provide longer consumable life and up to a 30% reduction in consumable costs.*
- CopperPlus® electrodes, designed exclusively for use with Duramax torches, provide at least 2 times longer consumable life over standard consumables when cutting metal 1/2" and under to reduce your operating costs.**

Ease of use

- Duramax retrofit torches use the torch connection designed for your system which makes retrofitting easy.
- Retrofit torches for Powermax600, 800, 900 and MAX42/43 are available with or without quick disconnect. Easy Torch Removal (ETR) connections come standard on retrofit torches for Powermax1000, 1250 and 1650 systems.

* When compared with standard T60/T80/T100 torches and/or consumables for Powermax1000/1250/1650.

** Standard consumables refer to the original Hypertherm consumables designed for the system.



Handheld torch lead with quick disconnect



Mechanized torch lead with quick disconnect



Handheld or mechanized torch lead without quick disconnect for Powermax600 CE systems



Easy Torch Removal (ETR) connection

Part number	Torch assemblies for Powermax600/800/900 and MAX42/43
228916	Duramax HRT hand torch assembly with 25' leads
228917	Duramax HRT hand torch assembly with 50' leads
228918	Duramax HRT hand torch assembly with 25' leads**
228919	Duramax HRT hand torch assembly with 50' leads**
228920	Duramax HRT machine torch assembly with 25' leads
228921	Duramax HRT machine torch assembly with 50' leads
228922	Duramax HRT machine torch assembly with 25' leads**
228923	Duramax HRT machine torch assembly with 50' leads**

**Without quick disconnect for Powermax600 CE models.

Part number	Torch assemblies for Powermax1000/1250/1650
228788	Duramax HRT hand torch assembly with 25' leads
228789	Duramax HRT hand torch assembly with 50' leads
228807	Duramax HRTs hand torch assembly with 25' leads
228808	Duramax HRTs hand torch assembly with 50' leads
228790	Duramax MRT machine torch assembly with 25' leads
228791	Duramax MRT machine torch assembly with 50' leads

Cutting guides



Circle cutting guide

Quick and easy setup for accurate circles up to 28" diameter and as a stand-off guide for straight and bevel cuts. For use with Powermax system torches. Made in USA

127102 Basic kit – 15" arm, wheels and pivot pin

027668 Deluxe kit – 11" arm, wheels, pivot pin, anchor base and plastic case

017053 Hyamp deluxe kit – 11" arm, wheels, pivot pin, anchor base and plastic case*

*For use with Hyamp torches only



Angle cutting guide

Protractor with magnetic base holds straight or square edges to make cutting precise angles easy. Made in USA

017041



Pocket level and tape holder

Magnetic base and tape holder with built-in level. Made in USA

017044



Magnetic straight edge

Two magnet blocks with 24" straight edge. Made in USA

017042



Magnetic block 3-pack

Attaches to any standard square or straight edge up to 1/8" thick. Slotted on three sides. Made in USA

017043

Personal protective equipment



Hyamp™ helmet

Premium auto-dim shade 8–12 with large 7.92 square inches viewing area for cutting, welding and gouging. Includes clear safety shields, pouch and sticker sheet. ANSI Z87.1, CSA Z94.3, CE.

017031



Face shield

Clear face shield with flip-up shade for cutting and grinding. Safety shield included ANSI Z87.1, CSA Z94.3, CE.

127239 Face shield shade 6

127103 Face shield shade 8

017047* Face shield for hard hat shade 6

017048* Face shield for hard hat shade 8

017030 Leather neck guard (optional)

017029 Replacement shade 5 (for <40 A)

127243 Replacement shade 6 (for <60 A)

127105 Replacement shade 8 (for <80 A)

127104 Clear shield replacement

017046 Hard hat only (white)

*Hard hat not included



Cutting goggles

Shade 5 (for <40 A) soft body goggle fits over prescription glasses. ANSI Z87.1, CSA Z94.3, CE.

017035



Basic eyewear

127416 Shade 5 adjustable eyeshade
017034 Clear safety eye shields



Flip-up eyeshades

Shade 5 (for <40 A) flip-up shade, anti-scratch lens and adjustable frame. ANSI Z87.1, CSA Z94.3, CE.

017033



Durafit cutting gloves

Designed to offer maximum dexterity and fine-motor control.

- Fire resistant goatskin leather and stretch Nomex® backhand
- Reinforced leather in wear areas
- Made in USA

017037 Medium
017038 Large
017039 X-Large
017040 2X-Large



Hyamp cutting and gouging gloves

Insulated for heavy duty applications. Gun-cut palm design with seamless trigger finger and extended cuff provide flexibility and protection.

- Fire resistant goatskin leather and suede
- Padded areas for extra heat and abrasion protection
- Made in USA

017025 Medium
017026 Large
017027 X-Large
017028 2X-Large



Arc-rated metalworking jersey

Top quality washable welder wear made from modacrylic fabric for flame and arc flash resistance. Durable with no chemical treatment.

- Tested for protection and durability: ASTM 1506-10a; OSHA 1910.269; NFPA 70E
- Arc rating = 28 cal/cm²
- Made in the USA from U.S. made 14 oz. fleece

017016 Medium, black
017017 Large, black
017018 X-Large, black
017019 2X-Large, black
017020 3X-Large, black



Cutting blanket

5' x 6' 18 oz. fiberglass blanket protects nearby surfaces from cutting and gouging sparks. Rated for 1000° F.

017032



Leather cutting gloves

Pigskin grain leather.

127169

System accessories



Work cables

Three grounding connection styles. 50' and 75' lengths available.

Powermax65

- 223125 Hand clamp 25'
- 223194 C-style clamp 25'
- 223200 Ring terminal 25'

Powermax85

- 223035 Hand clamp 25'
- 223203 C-style clamp 25'
- 223209 Ring terminal 25'

Powermax105

- 223254 Hand clamp 25'
- 223287 C-style clamp 25'
- 223284 Ring terminal 25'

Powermax125

- 223292 Hand clamp 25'
- 223298 C-style clamp 25'
- 223295 Ring terminal 25'



Remote pendants

Remote on/off control for a machine torch attaches to the CPC port on Powermax45, 65, 85, 105 and 125 models.

- 128650 25'
- 128651 50'
- 128652 75'



Wheel/gantry kits

Complete, pre-assembled kits for added mobility or mounting on a cutting table gantry.

- 229370 Powermax65/85 wheel kit
- 229467 Powermax105/125 wheel kit
- 229570 Powermax105/125 gantry kit



Air filtration kits

Ready-to-install kits with a 1-micron filter and an auto-drain moisture separator protects against contaminated air.

- 128647 Filter only
- 228570 Filter plus cover for Powermax65/85
- 228624 Cover only for Powermax65/85
- 228890 Filter plus cover for Powermax105/125
- 101215 Cover only for Powermax105/125



Leather torch sheathing

Available in 25' sections, this option provides additional protection for torch leads against burn-through and abrasion.

- 024548 Brown leather
- 024877 Black leather with Hypertherm logos



Torch carry bags

Durable bag for carrying spare torches, work cables and accessories.

- 127363 Standard torch bag (shown)
23" x 11" x 11"
- 107049 Duramax Hyamp 2' torch bag
- 107050 Duramax Hyamp 4' torch bag



System carry case

Rugged case for protecting and storing the Powermax30 or 30 XP and accessories.

127410



Gouging heat shield

Additional protection when gouging.

- 428347 Duramax torches
- 428348 Hyamp torches
- 128658 T45v and T60/80/100 torches

Machine interface cables

Cables for connecting the serial interface port to CNC controllers on Powermax65, 85, 105 and 125 models.

- 223236 RS-485 to unterminated 25'
- 223237 RS-485 to unterminated 50'
- 223239 RS-485 to 9-pin D-sub connector 25'
- 223240 RS-485 to 9-pin D-sub connector 50'

Cables for connecting the CPC port to CNC controllers on Powermax45, 65, 85, 105 and 125 models.

- 023206 14-pin CPC to spade connector 25'
- 023279 14-pin CPC to spade connector 50'
- 228350 14-pin CPC to spade connector 25', for divided arc voltage
- 228351 14-pin CPC to spade connector 50', for divided arc voltage
- 123896 14-pin CPC to D-sub connector 50', for divided arc voltage



System dust covers

Made from a flame-retardant vinyl, a dust cover will protect your Powermax system for years.

- 127144 Powermax30/30 XP
- 127469 Powermax30 AIR
- 127219 Powermax45
- 127301 Powermax65/85
- 127360 Powermax105/125

Serial interface
port (RS-485)

CPC port



Mechanized communication kits

Upgrade kits for the Powermax65, 85, 105 and 125 systems for mechanized applications.

- 228697 CPC port with selectable voltage divider board, Powermax65 and 85
- 228884 CPC port with selectable voltage divider board, Powermax105 and 125
- 228539 Upgrade kit: Serial interface port (RS-485)



Nearly 50 years of cutting excellence

At Hypertherm, our sole focus is cutting. Every Associate – from our engineers to our manufacturing and service teams – is completely focused on providing our customers with the best cutting solutions in the industry. It's a mission stretching back nearly 50 years to our first industrial cutting patent. Today, our patent wall continues to expand as we innovate tirelessly to introduce new plasma, laser and waterjet technologies and services that will help you achieve optimal cutting outcomes that support your business objectives. So, whether you're cutting precision parts in North America, constructing a pipeline in Norway, fabricating agricultural machinery in Brazil, gouging out welds in the mines of South Africa, or building a skyscraper in China, you can count on Hypertherm. No matter what you cut, where you cut, or how you cut, we are here to guide you toward the cutting solution that is right for you.

100% employee ownership

At Hypertherm, we aren't just employees: we're all owners. Ownership is a powerful motivator that ensures our customers – not investors – are our top priority. As owners, we make sure every product is built to the highest quality and that our service is second to none.

Worldwide presence and strength

Hypertherm is a key partner for your fabrication needs and has built a global organization focused on providing cutting performance solutions.

Key elements of the Hypertherm formula include:

- Dedicated associates concentrating on cutting technology
- Regional sales, customer service and technical service for local support
- Broad application experience and proven results
- Complete product line solutions for your cutting needs
- Commitment to customer-centered product design, support and support



For location nearest you, visit:
www.hypertherm.com

Engineered and assembled in the USA
ISO 9001:2008

Hypertherm, Powermax, FineCut, Duramax, FastConnect, Smart Sense and CopperPlus are trademarks of Hypertherm Inc. and may be registered in the United States and/or other countries. All other trademarks are the property of their respective owners.

Environmental stewardship is a core value of Hypertherm. Our Powermax products are engineered to meet and exceed global environmental regulations including the RoHS directive.

© 3/2015 Hypertherm Inc. Revision 10

893020

Hypertherm[®]
Cut with confidence[®]

